



**EITEL-McCULLOUGH, INC.**  
SAN CARLOS, CALIFORNIA

**SK-1400A**  
**SK-1470A**

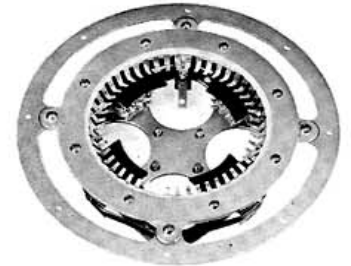
**AIR-SYSTEM  
SOCKETS**

The Eimac SK-1400A and SK-1470A Air-System Sockets are intended for use with the 4CX3000A and the 4CV8000A. The SK-1400A incorporates an integral screen by-pass capacitor and has no grounded contacts. The SK-1470A does not include a by-pass capacitor but does have the screen contacts grounded to the socket mounting plate.

**BASE CONNECTIONS**

A continuous screen grid contact finger assembly is provided for making contact with the solid screen ring flange on the 4CX3000A or 4CV8000A. Grid and filament connections to the tube are made by four rows of contact tab assemblies that provide for breech-block electrical and mechanical contact.

Each grid contact is terminated in two machine screws at the bottom of the socket base. Filament connections are to a terminal strap and to the socket base.



**BY-PASS CAPACITOR**

The SK-1400A is provided with an integral 1800 $\mu$ f screen by-pass capacitor rated at 1000 volts dc. The screen contact fingers are attached to one side of this capacitor. The SK-1470A does not contain this capacitor; instead the screen contacts are grounded directly to the socket shell.

**INSTALLATION**

When mounted on a chassis or pressurized compartment, a 7-1/4" diameter hole is required for the socket. The socket is secured by eight #6 screws on a 7-3/4" bolt circle. These same screws are used to install the companion SK-1406 chimney used with the air-cooled 4CX3000A.

**MATERIALS**

The contact fingers and tabs are a non-ferrous spring alloy, heat-treated and silver-plated. The socket body is made of silver-plated brass.

**CHIMNEY**

The SK-1406 chimney is available for use with the SK-1400A or SK-1470A and the air-cooled 4CX3000A. It effectively directs air that has passed through the socket into the anode cooling fins.

Note: Where a "floating" socket is desired - especially for the 4CV8000A - the SK-1490 is available. This is a SK-1470 without the mounting ring and is intended for use where the tube is fixed and the socket is to be removable.

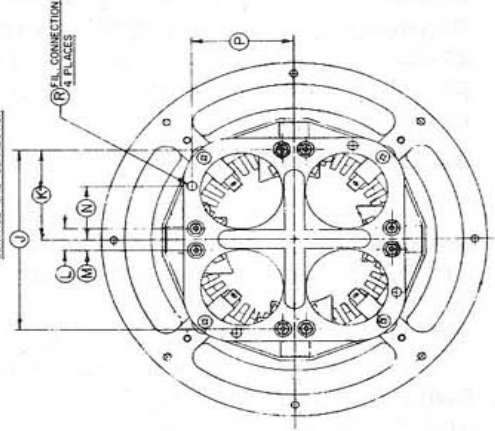
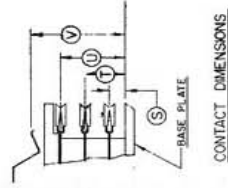
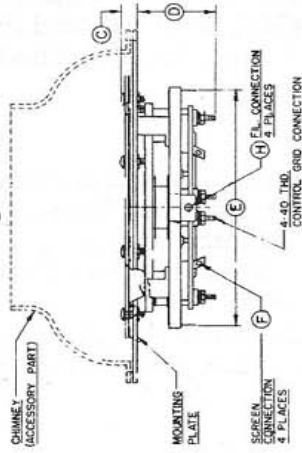
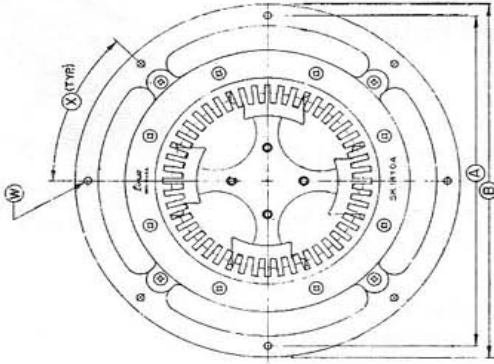
NET WEIGHT . . . . . 30 ounces



SK-1400A

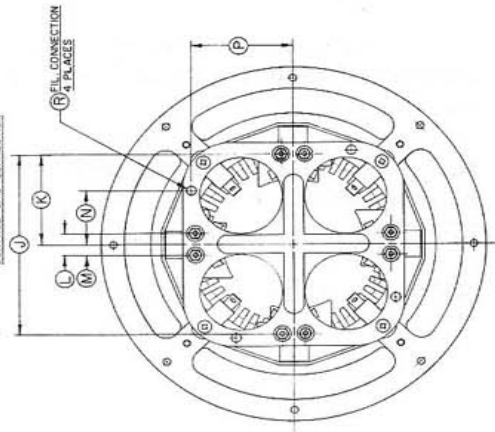
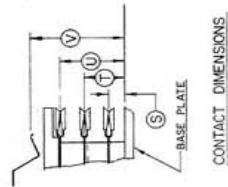
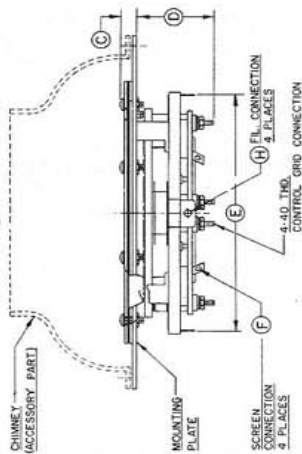
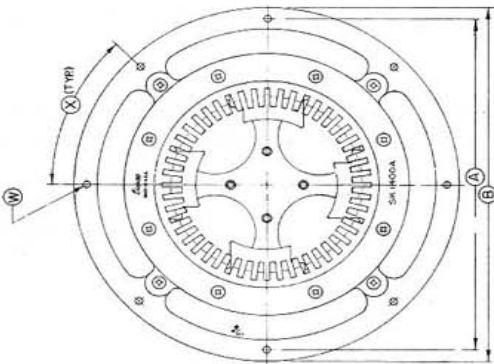
SK-1470A

REF.	DIMENSIONAL DATA		
	MAX.	MIN.	NOM.
A	7.765 DIA. P.C.	7.734 DIA. P.C.	
B	8.266 DIA.	8.234 DIA.	
C	.354	.312	
D	1.697	1.657	
E	5.540	5.509	
F	.141 DIA.	.109 DIA.	
H	.176	.166	
J	4.207	4.197	
K	2.106	2.096	
L	.506	.494	
M	.253	.247	
N	1.266	1.234	
P	2.203	2.171	
R	.208 DIA.	.198 DIA.	
S	.181	.169	
T	.445	.425	
U	.729	.701	
V	1.122	1.090	
W	.153 DIA.	.142 DIA.	
X	46°	44°	



SK-1470A

REF.	DIMENSIONAL DATA		
	MAX.	MIN.	NOM.
A	7.765 DIA. P.C.	7.734 DIA. P.C.	
B	8.266 DIA.	8.234 DIA.	
C	.354	.312	
D	1.697	1.657	
E	5.540	5.509	
F	.141 DIA.	.109 DIA.	
H	.176	.166	
J	4.207	4.197	
K	2.106	2.096	
L	.506	.494	
M	.253	.247	
N	1.266	1.234	
P	2.203	2.171	
R	.208 DIA.	.198 DIA.	
S	.181	.169	
T	.445	.425	
U	.729	.701	
V	1.122	1.090	
W	.153 DIA.	.142 DIA.	
X	46°	44°	



SK-1400A