



TECHNICAL DATA

SK-816  
SK-860  
SK-870

AIR-SYSTEM SOCKET  
and CHIMNEY

The EIMAC SK-860 and SK-870 are air-system sockets recommended for use with the EIMAC 3CX1000A7 triode. A companion SK-816 Air Chimney is also available and is recommended for use with the socket.

When this socket is used, connection is made to each of the tube electrodes except the anode. The SK-860 and SK-870 are humidity and salt-spray resistant.

BASE CONNECTIONS

The SK-860 and SK-870 sockets consist of three sets of spring-finger contacts for each tube electrode (to assure low-inductance contact) and a center guide to facilitate tube installation. The terminals are shown on the outline drawing.

No contacts are grounded on the SK-860, while the SK-870 has the grid contacts grounded to the equipment chassis when installed.



MATERIALS and FINISHES

The metal shell, or body, of the socket is fabricated of silver-plated brass, while the mounting base is a one-piece nickle-plated die casting. All contacts are formed of a non-ferrous alloy, heat treated and silver-plated. Contact insulating material is high-temperature ceramic.

INSTALLATION

The SK-860 and SK-870 are designed for under-chassis mounting and require a 2-3/4" diameter hole through the chassis deck. The socket is held in place by the six 4-40 studs provided on the socket. The grid of the SK-870 is automatically grounded to the chassis when this mounting method is used.

AIR CHIMNEY

The SK-816 Air Chimney is molded of fiberglass-reinforced silicone resin. It effectively directs the flow of air to the anode cooling fins with minimum pressure drop and is recommended for use with each SK-860 and SK-870.

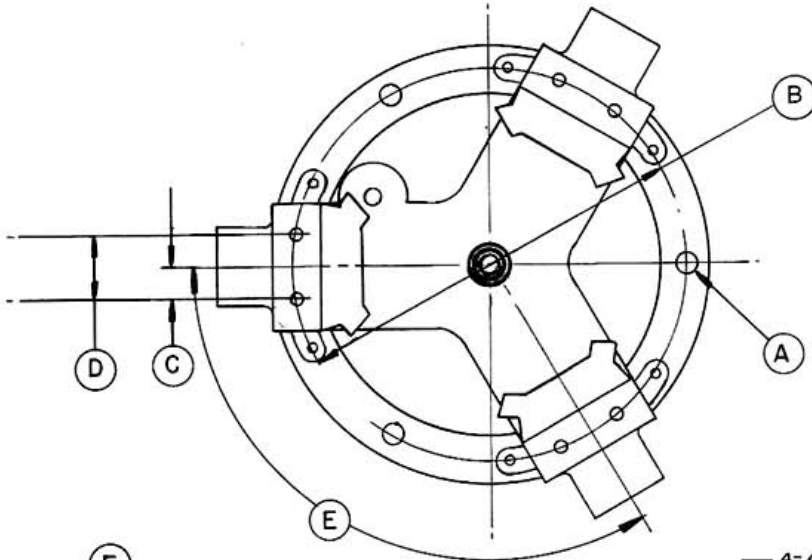
NET WEIGHT . . . . . 12 oz; 340 gms

(Revised 3-25-75) © 1963, 1967, 1975 by Varian

Printed in U.S.A.

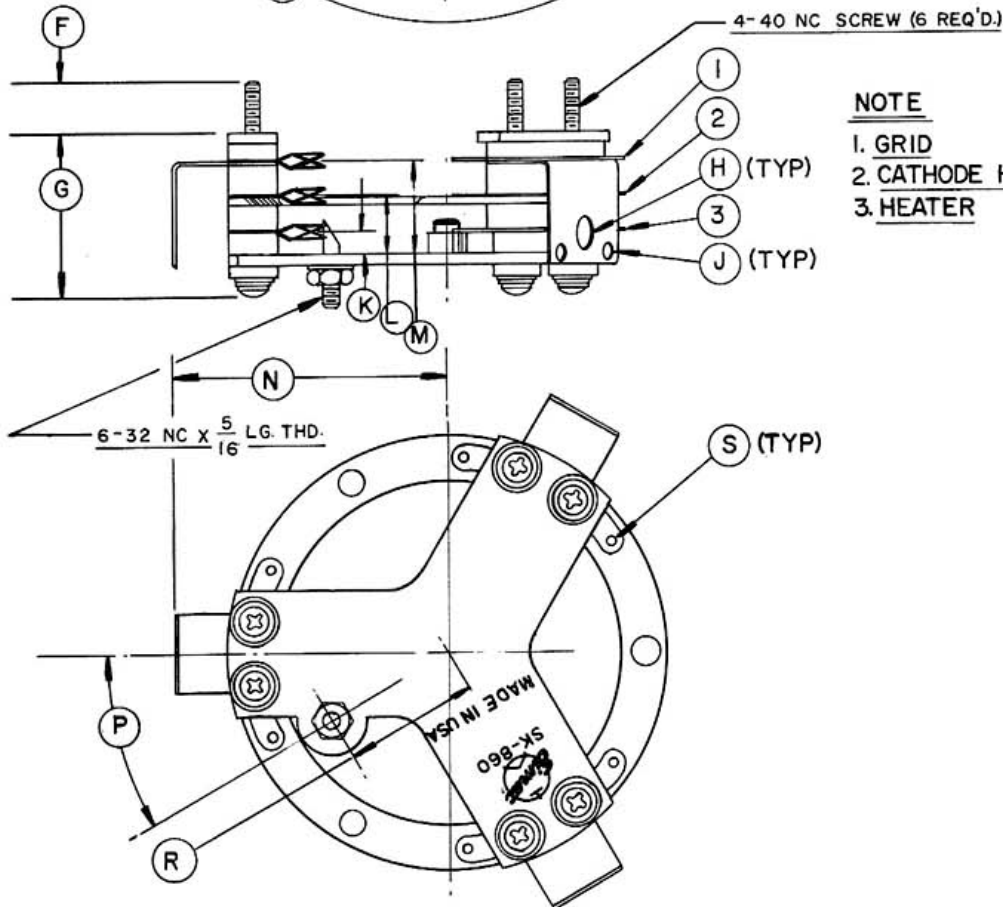


SK-816/SK-860/SK-870



| DIM | DIMENSIONAL DATA |       |       |             |       |       |
|-----|------------------|-------|-------|-------------|-------|-------|
|     | INCHES           |       |       | MILLIMETERS |       |       |
|     | MIN.             | MAX.  | REF.  | MIN.        | MAX.  | REF.  |
| A   | 0.160            | 0.180 | --    | 4.06        | 4.57  | --    |
| B   | 3.040            | 3.085 | --    | 77.22       | 78.36 | --    |
| C   | 0.234            | 0.266 | --    | 5.94        | 6.76  | --    |
| D   | 0.484            | 0.516 | --    | 12.29       | 13.11 | --    |
| E   | 119°             | 121°  | --    | 119°        | 121°  | --    |
| F   | --               | --    | 0.270 | --          | --    | 6.86  |
| G   | 1.215            | 1.295 | --    | 30.86       | 32.89 | --    |
| H   | --               | --    | 0.170 | --          | --    | 4.32  |
| J   | --               | --    | 0.092 | --          | --    | 2.34  |
| K   | 0.160            | 0.180 | --    | 4.06        | 4.57  | --    |
| L   | 0.430            | 0.460 | --    | 10.92       | 11.68 | --    |
| M   | 0.690            | 0.735 | --    | 17.53       | 18.67 | --    |
| N   | --               | --    | 1.985 | --          | --    | 50.42 |
| P   | 29°              | 31°   | --    | 29°         | 31°   | --    |
| R   | --               | --    | 1.062 | --          | --    | 26.97 |
| S   | --               | --    | 0.066 | --          | --    | 1.68  |

NOTE: REFERENCE DIMENSIONS ARE FOR INFORMATION ONLY & ARE NOT REQUIRED FOR INSPECTION PURPOSES.



**NOTE**

1. GRID
2. CATHODE HEATER
3. HEATER