



EITEL-McCULLOUGH, INC.
SAN BRUNO · CALIFORNIA

TENTATIVE DATA

SK-900

SOCKET
and

SK-906

CHIMNEY

The Eimac SK-900 Air-System Socket and companion SK-906 Air Chimney are intended for use with the Eimac 4X500A. The socket makes connection to each of the tube electrodes except the anode. A screen-grid by-pass capacitor is incorporated as an integral part of the socket.

BASE CONNECTIONS

Filament, control-grid, and screen-grid pins of the tube are engaged by four self-aligning pin-jacks supported in a disk of low-loss material and terminating in 10-32 studs. The connecting leads to these studs must be sufficiently flexible to allow free movement of the pin-jacks or the self-aligning feature will be impaired. The supporting insulating disk rests on a shoulder turned into the bottom of the socket body and is held in place by four machine screws which act as clamps. This design permits the insulation and terminal assembly to be rotated to any convenient position and clamped firmly in place.

SCREEN-GRID BY-PASS CAPACITOR

This capacitor utilizes polyester film as the dielectric and is encapsulated in epoxy resin. The capacitance is $650 \mu\text{f} \pm 20\%$ and is rated at 700 working volts. One side of the by-pass capacitor contacts the screen-grid flange of the tube through eight spring fingers and the other side is directly connected to the socket body.

INSTALLATION

The SK-900 Air-System Socket is designed for under-chassis mounting and requires a 3 5/8-inch hole through the chassis deck. The socket is held in place by four 8-32 machine screws running through the chassis and into tapped holes in the cast aluminum socket body. One side of the screen-grid by-pass capacitor is automatically grounded to the chassis when this mounting method is used.

An air blower may be connected to the socket air-inlet by means of a duct terminating in a cylindrical fitting of 1 1/4-inch OD or the entire chassis may be pressurized.

Pressure drop across the socket and tube (with SK-906 installed) may be measured by a manometer arranged to indicate the pressure difference between the air in the socket (or pressurized chassis) and the surrounding air. A 1/4-28 tapped hole is provided in the socket body to facilitate the installation of a fitting. A suitable fitting will have a hole diameter of approximately 1/64 inch and when installed, must be flush with the inner wall of the socket to avoid inaccurate pressure measurements.

SK-906 AIR CHIMNEY

The air chimney is molded of fiber-glass reinforced silicone resin and fitted with an anode clamp. It effectively directs the flow of air to the anode cooling fins with minimum pressure drop and is recommended for use with each SK-900 Air-System Socket.

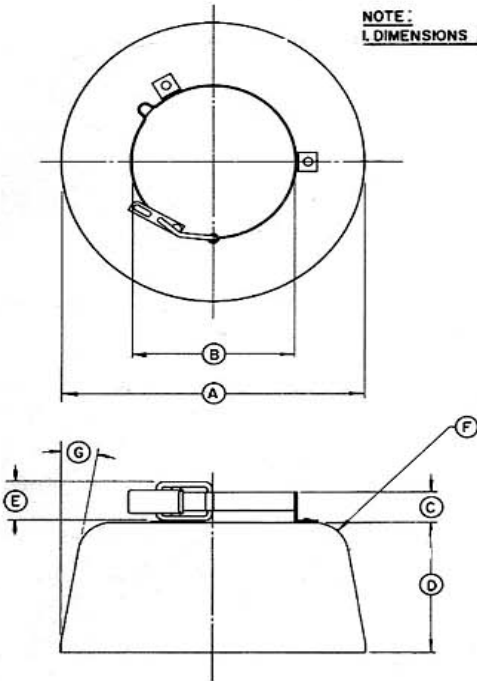




SK-900
SK-906

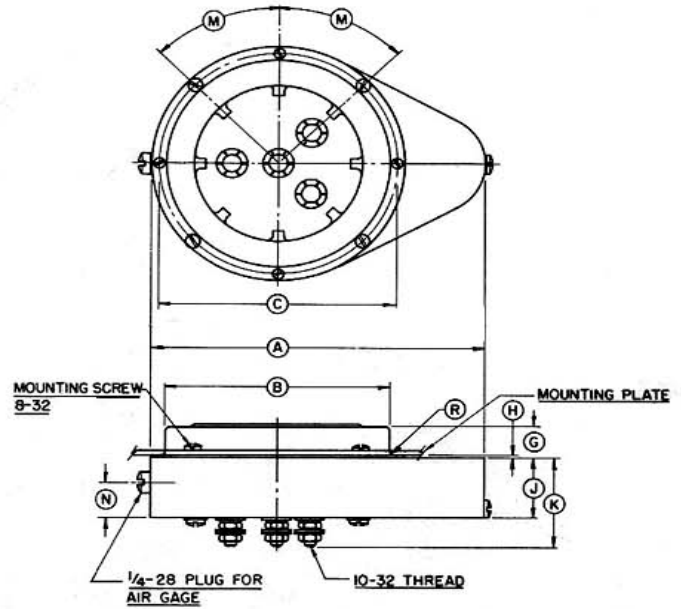
DIMENSION DATA			
REF.	MIN.	MAX.	NOM.
A	3.720 DIA.	3.740 DIA.	
B	1.990 I.D.	2.010 I.D.	
C	3/8	7/16	
D	1.715	1.735	
E	.510	.530	
F			13/32 R.
G	9°	11°	

NOTE:
1. DIMENSIONS ARE IN INCHES.

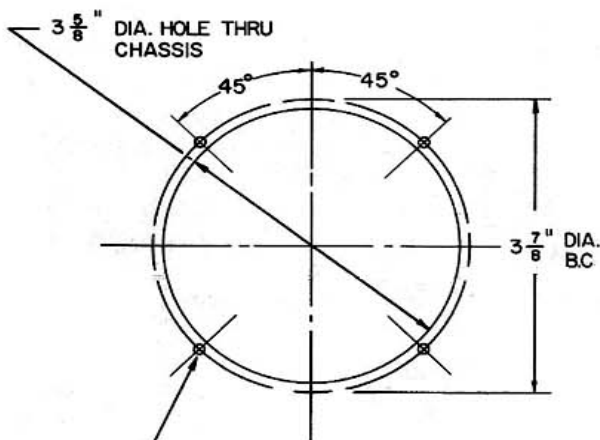


SK-906 CHIMNEY

DIMENSION DATA			
REF.	MIN.	MAX.	NOM.
A	5 3/8	5 1/2	
B	3.595 DIA.	3.605 DIA.	
C	3.864 DIA.	3.884 DIA.	
D	4 1/16 DIA.	4 3/16 DIA.	
E	1.490 DIA.	1.510 DIA.	
F	1.248 DIA.	1.263 DIA.	
G	.512	.532	
H	.040	.060	
J	1 3/64	1 5/64	
K	1 3/64	1 3/64	
L	2 15/32 DIA.	2 17/32 DIA.	
M	44°	46°	
N	19/32	21/32	
P	27/32 R.	29/32 R.	
R			.031 R

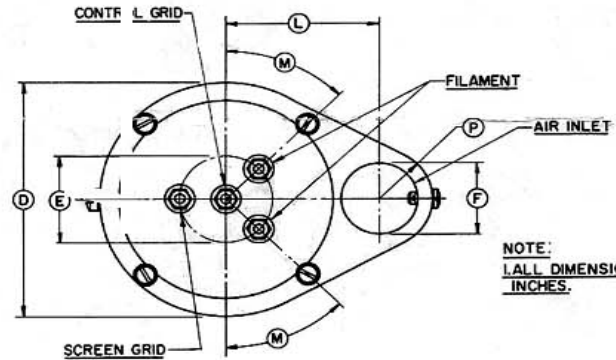


SK-900 SOCKET



*19 (.166) DRILL THRU (TO CLEAR 8-32)
4 HOLES

SK-900 CHASSIS DRILLING



NOTE:
1. ALL DIMENSIONS IN INCHES.